

LED导光柱 LED PIPE



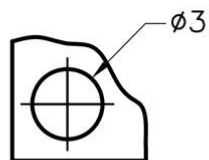
用途：使S.M.T LED导光于机壳面板上，使光度均匀、柔和。

MATERIAL : PC(UL)

FLAME CLASS : 94V-0,94V-2

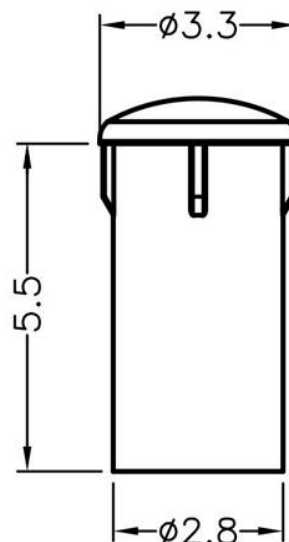
COLOR : TRANSPARENT

UNIT : mm



MOUNTING HOLE

PART NO	PACKAGE
LEDLP-161	1000



2

LED导光柱 LED PIPE



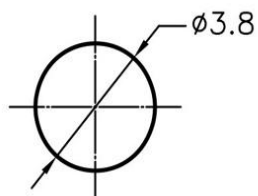
用途：使 LED 导光于机壳面板上，使光度均匀、柔和

MATERIAL : PC(UL)

FLAME CLASS : 94V-0,94V-2

COLOR : TRANSPARENT

UNIT : mm



MOUNTING HOLE

PART NO	PACKAGE
LEDLP-162	1000

